

**The Ashdown Forest Centre  
Wych Cross  
Forest Row  
East Sussex  
RH18 5JP**

**Phone: +44 (0)1342 823583**

**Emergency Phone: +44 (0)1342 822846**

**Fax: +44 (0)1342 824177**

**e-mail: [conservators@ashdownforest.org](mailto:conservators@ashdownforest.org)**

The Forest Centre acts as both an information centre for visitors and also an office for the Conservators of Ashdown Forest. The Information Centre often has exhibitions of all sorts including local artists, photographers and other events.

**Information Centre Opening Hours**

Summer Weekends (1 April to 30 September) 11:00 to 17:00

Winter Weekends (1 October to 31 March) 11:00 to 16:00

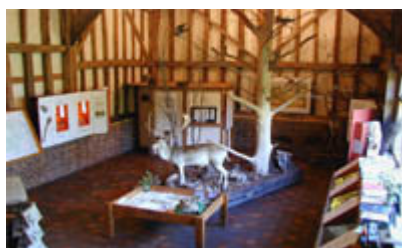
Bank Holidays (excluding Christmas and Boxing Day) 11:00 to 16:00

Summer Weekdays (1 April to 30 September) 14:00 - 17:00

Winter Weekdays (1 October to 31 March) - Closed unless an event is taking place.

**Office Opening Hours**

Monday to Friday 09:00 - 16:30 (closed for lunch 12:30 - 14:00)



## Directions

The Forest Centre is located opposite the Ashdown Park Hotel on the Colemans Hatch Road, one mile east of the Wych Cross traffic lights on the A22.

### From London

Exit the M25 at junction 6 and follow signs for the A22 (East Grinstead/Brighton). Follow the A22 towards Brighton through East Grinstead and Forest Row. After passing through the village of Forest Row, turn left at the first set of traffic lights in Wych Cross which is Colemans Hatch Road. The Forest Centre is approximately 1 mile on the left hand side, just past the Ashdown Park Hotel which is on the right.

### From the M23

Exit the M23 at junction 10 and follow signs for the A264 East Grinstead. Continue along the A264 until you reach the junction with the A22 and turn right on to the A22. Follow the A22 towards Brighton through East Grinstead and Forest Row. After passing through the village of Forest Row, turn left at the first set of traffic lights in Wych Cross which is Colemans Hatch Road. The Forest Centre is approximately 1 mile on the left hand side, just past the Ashdown Park Hotel which is on the right.

### From Brighton

From Brighton follow the A27 towards Eastbourne and take the A275 towards Lewes. Go through Lewes and follow the A275 north towards London. When the A275 reaches the A22 turn left onto it and then turn immediately right at the traffic lights onto "Colemans Hatch Road". The Forest Centre is approximately 1 mile on the left hand side, just past the Ashdown Park Hotel which is on the right.

